

CONTAINER PARTS Catalogue

NZ 2021



Flooring & Accessories
Door Parts
Container Panels
Container Accessories & more

DOOR PARTS

Container Layout Drawing.....	04
Door Parts.....	04
Bloxwich Door Parts.....	05
Alternative Door Parts.....	06
Reefer Door Parts.....	07
Door Gear Sets.....	08
Locking Rods.....	08
Forged Handle Parts.....	08-09
Door Hinges: Dry.....	10
Door Hinges: Pin.....	10
Door Gaskets.....	11
G-Strips.....	12
Loctite Gasket Glue.....	12

DOOR SECURITY

Door Security Seals.....	12
--------------------------	----

CONTAINER ACCESSORIES

Plywood Flooring.....	13
Plywood Rebate Flooring.....	13
Floor Screws.....	13
Masking Tape.....	13

DECALS

Letters & Numbers.....	13
Decals: Weight Panels.....	14
Decals: General.....	14
CSC Plates & Inspection Stickers.....	14

CONTAINER SHEETS/PANELS

Flat Sheets: Aluminium.....	15
Flat Sheets: Stainless Steel.....	15
Flat Sheets: Corten.....	15

CORTEN HEADERS

Corten Headers.....	15
---------------------	----

ROOF PANELS

Corrugation Roof Panels.....	16-17
------------------------------	-------

WALL PANELS

Corten Side Wall Panel.....	18
Corten Front Wall Panel.....	18
Cronos Side Wall Panel.....	19

CORTEN CHANNELS

Corten Channels.....	19
Corten Angles.....	19

CORTEN DOOR SILLS

Corten Door Sills.....	20
Corten Front Sills.....	20

CORNER POSTS

Corner Posts: Front.....	21
Corner Posts: Rear.....	21
Corner Posts: Rear Inserts.....	21
Corten: Top Rails.....	21

REEFER PARTS

Corten Rail.....	22
Aluminium Reefer Flooring.....	22
Reefer Covings.....	22
Kazoos.....	23
Foam Products.....	23

CONTAINER ACCESSORIES

Ventilators.....	24
Tarpaulin Products.....	24
Shipping Corner Castings.....	25
Container Straps.....	25
Odour Neutraliser.....	25
Cargo Jacking Bars.....	26

SAFETY GEAR

Safety Gear: Gloves.....	26
--------------------------	----

CONTAINER CONSUMABLES

Silicone.....	27
Abrasives: Cutting/Grinding.....	27
Abrasives: Sanding.....	27
Drill Bits.....	27
Rivets.....	27
Nuts & Bolts.....	27

TWISTLOCKS

Twistlocks.....	28
Bridge Fitting.....	28

CARGO CARE

Dunnage Bags.....	29
Non-Toxic Desiccants.....	30

TERMS & CONDITIONS

Terms of Trade.....	31
---------------------	----

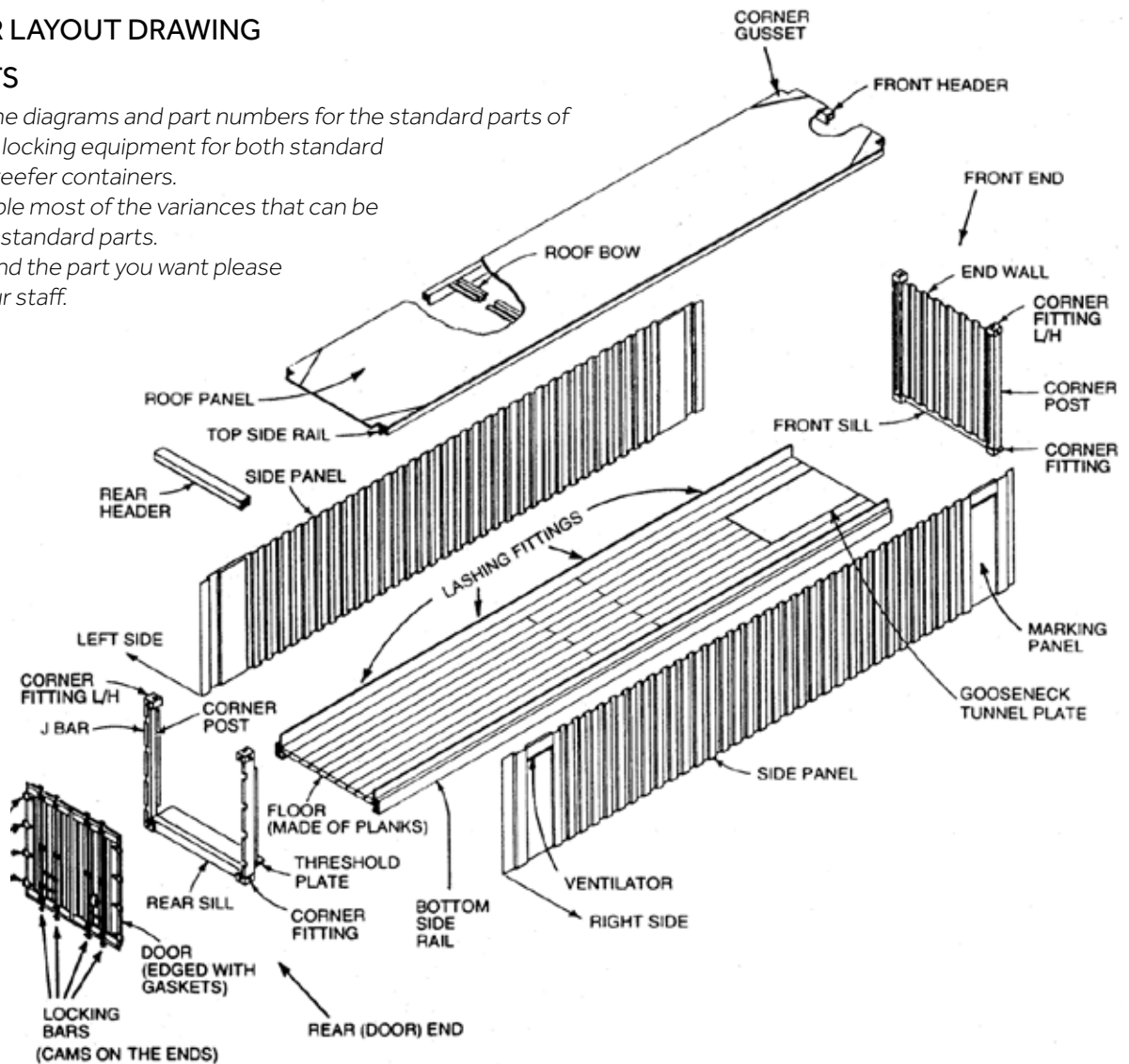
CONTAINER LAYOUT DRAWING

DOOR PARTS

Following are the diagrams and part numbers for the standard parts of container door locking equipment for both standard dry boxes and reefer containers.

We have available most of the variances that can be found to these standard parts.

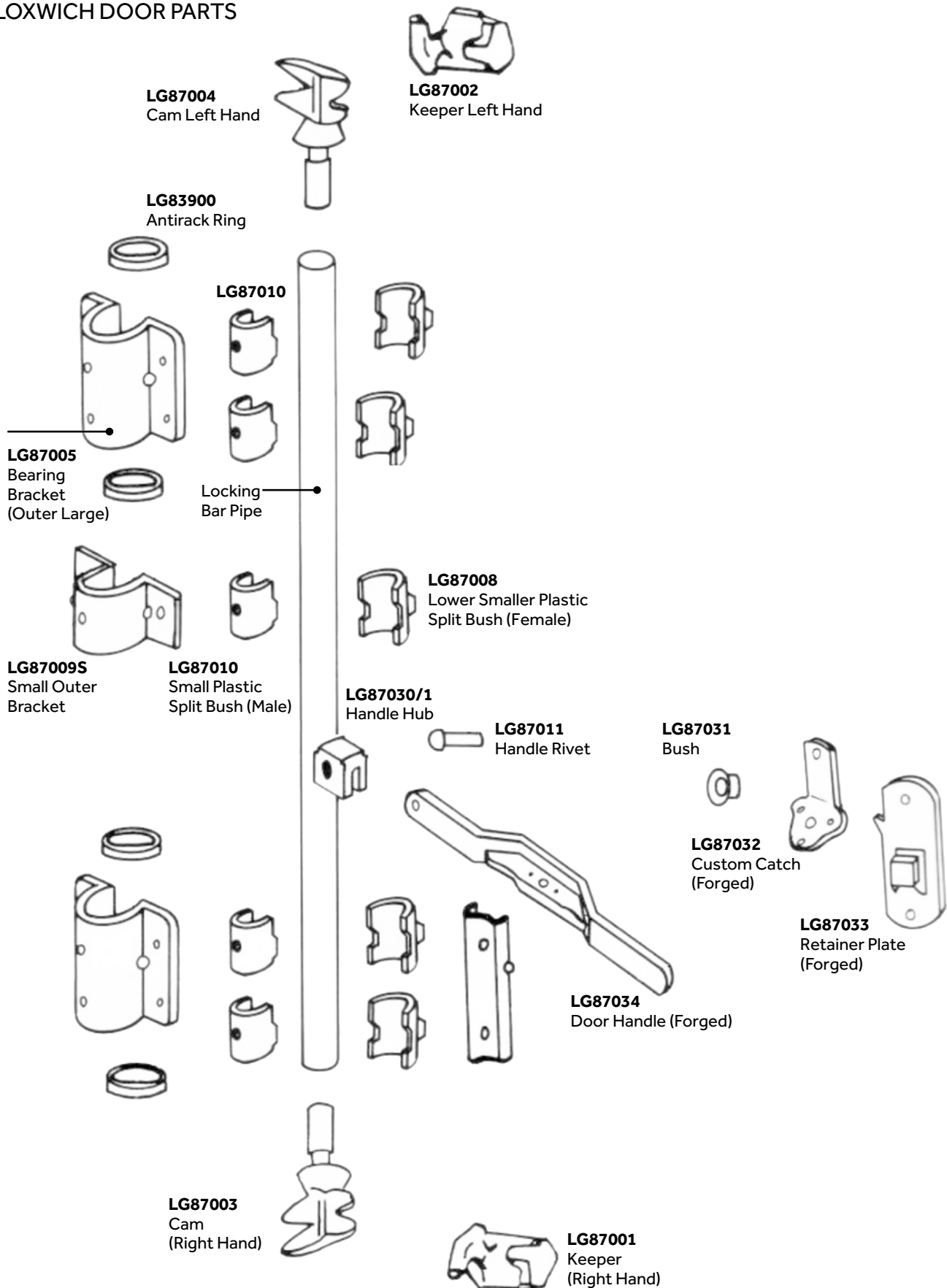
If you cannot find the part you want please enquire with our staff.

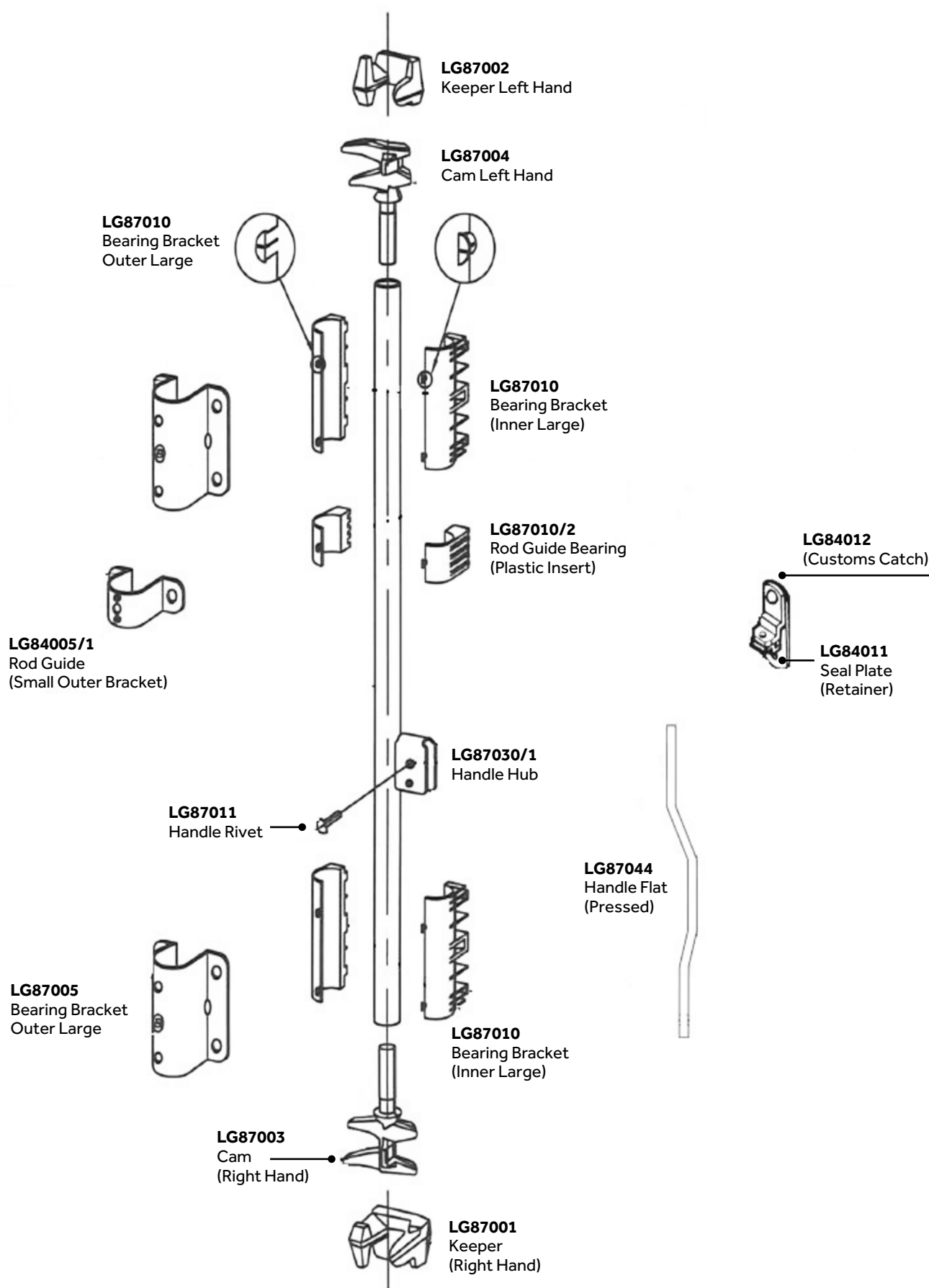


LG87005	Bearing Bracket Outer Large (Steel)
LG87010	Bearing Bracket Inner Large (Plastic)
LGLUG	Hinge Lug
LGH8200	Hinge blade 63.5mm Wide
LG83900	Antirack ring
LG84005/1	Rod Guide (Steel Outer Bracket Small)
LG87010/2	Rod Guide Bearing (Plastic Insert)
LG84011	Seal Plate (Retainer Plate)
LG84012	Seal Pin (Customs Catch)
LG87001	Keeper Right Hand
LG87002	Keeper Left Hand
LG87003	Cam Right Hand
LG87004	Cam Left Hand
LG87006	Bearing Bracket Inner Large (Steel)
LG87007	Upper Small Plastic Split Bush (Male)
LG87010/2	Lower Small Plastic Split Bush (Female)
LG87009S	Bearing Bracket Outer Small (Steel)
LG87010S	Bearing Bracket Inner Small (Steel)

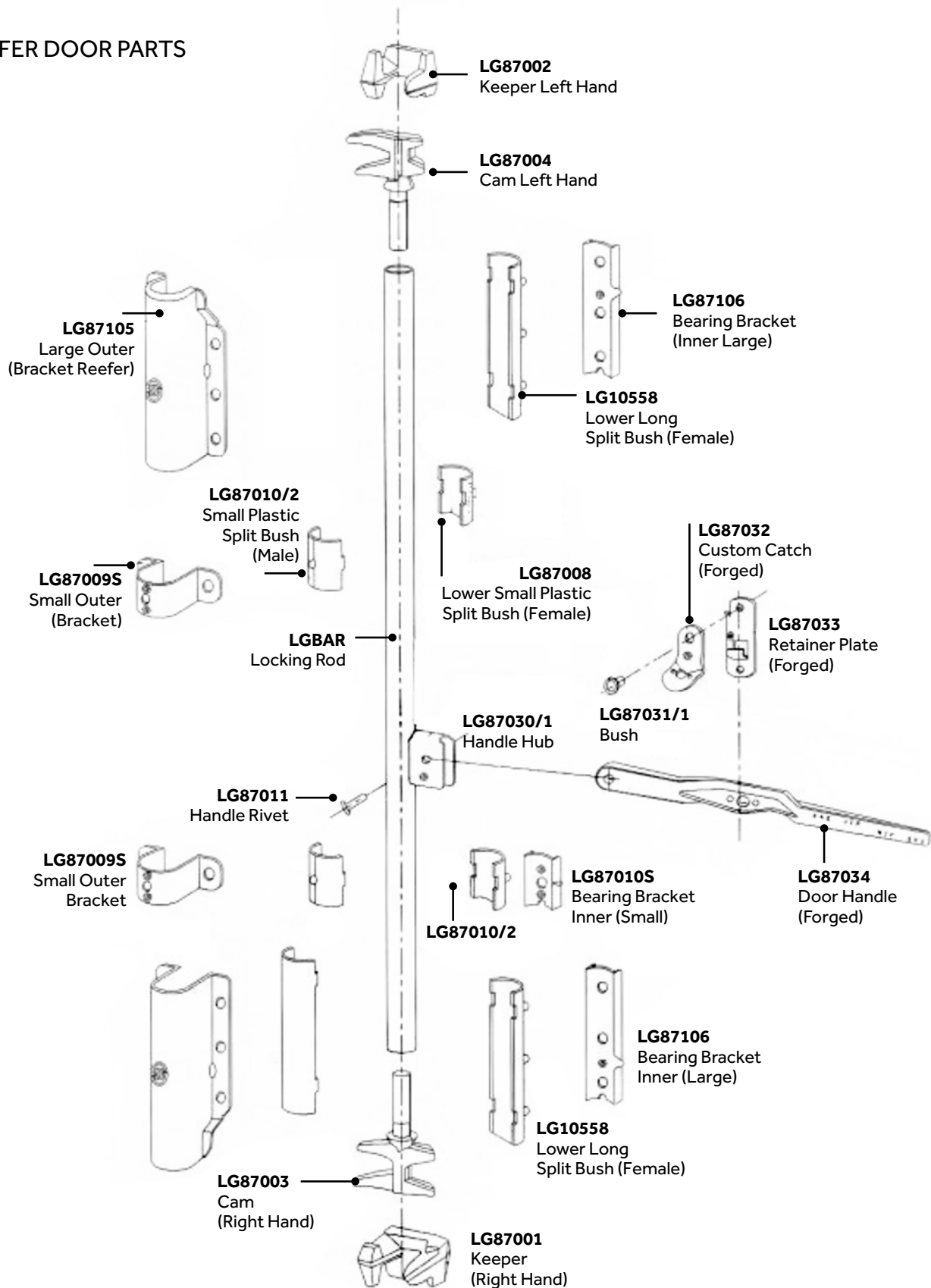
LG87021	Securakeeper
LG87002/2	Securacam
LG87011	Rivet For Door Handle
LG87030/1	Handle Hub
LG87031	Bush
LG87032	Customs Catch (Forged)
LG87033	Retainer Plate (Forged)
LG87034	Handle (Forged)
LG87044	Handle Flat (Pressed)
LG87105	Large Outer Bracket Reefer
LG87106	Large Inner Bracket Reefer
LGCMC06022	CIMC Reefer Hinge Blade 127mm x 225mm (Aluminium)
LGDOORTIE	Container Door Tie
LGHF002	Hinge Blade 79mm Wide
LGLASHRING	Lashing Ring
LG830002/2	Hinge Pin 110mm Long
MHINGEB	Steel Reefer Hinge 101mm x 241mm

BLOXWICH DOOR PARTS





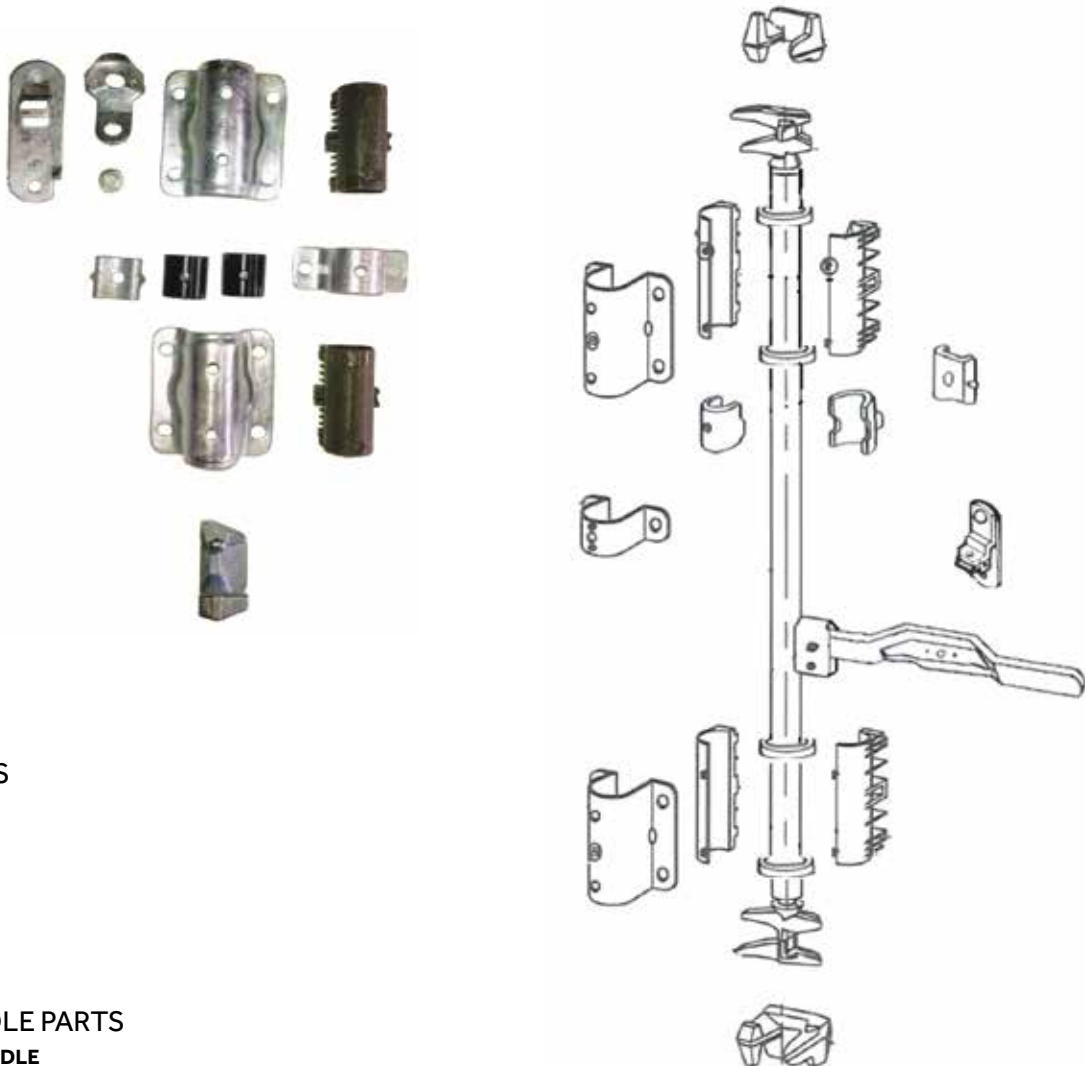
REEFER DOOR PARTS



DOOR GEAR SETS

LGSET CONTENTS

- LG87001 X 1
- LG87002 X 1
- LG87033 X 1
- LG87032 X 1
- LG87031/1 X 1
- LG87005 X 2
- LG87010 X 2
- LG87007 X 1
- LG87008 X 1
- LG87009S X 1
- LG87010S X 1



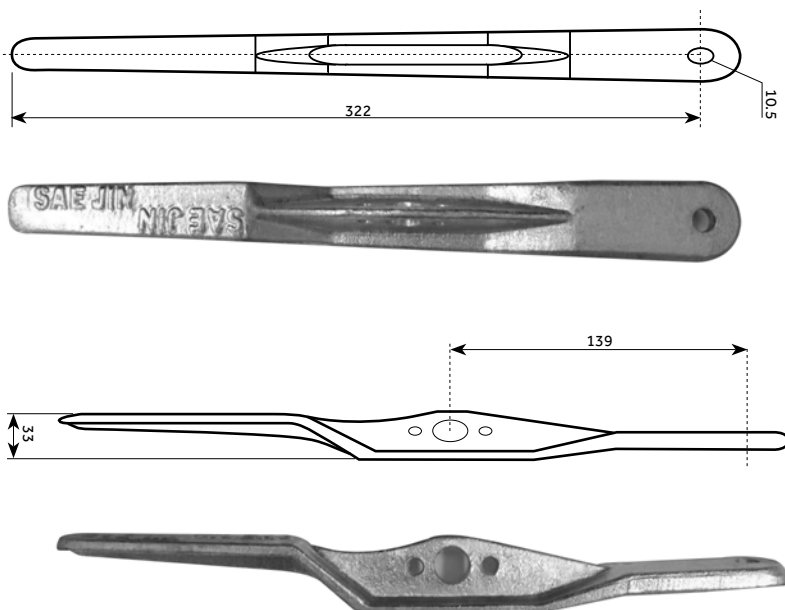
LOCKING RODS

PART No: **PIPE**
6.5 metre
25mm ID
33mm OD

FORGED HANDLE PARTS

FORGED DOOR HANDLE

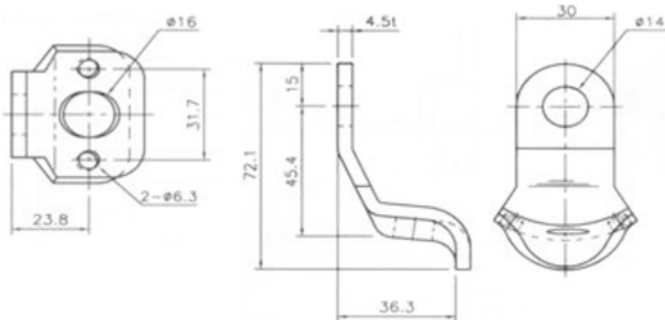
PART No: **LG87034**



FORGED HANDLE PARTS

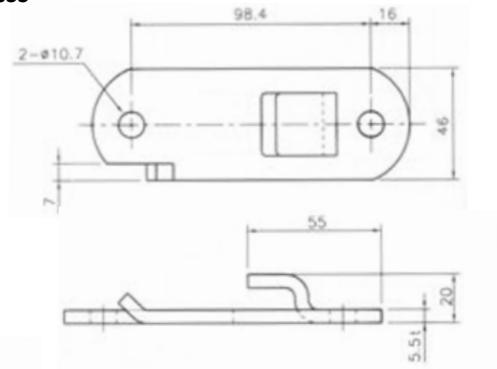
FORGED CUSTOMER CATCH

PART No: **LG87032**



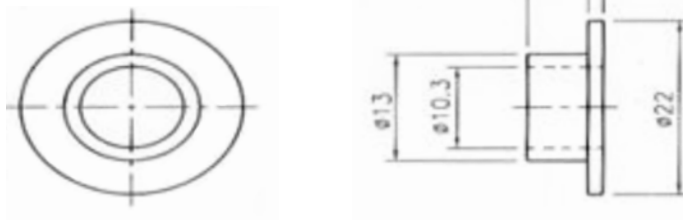
FORGED RETAINER PLATE

PART No: **LG87033**



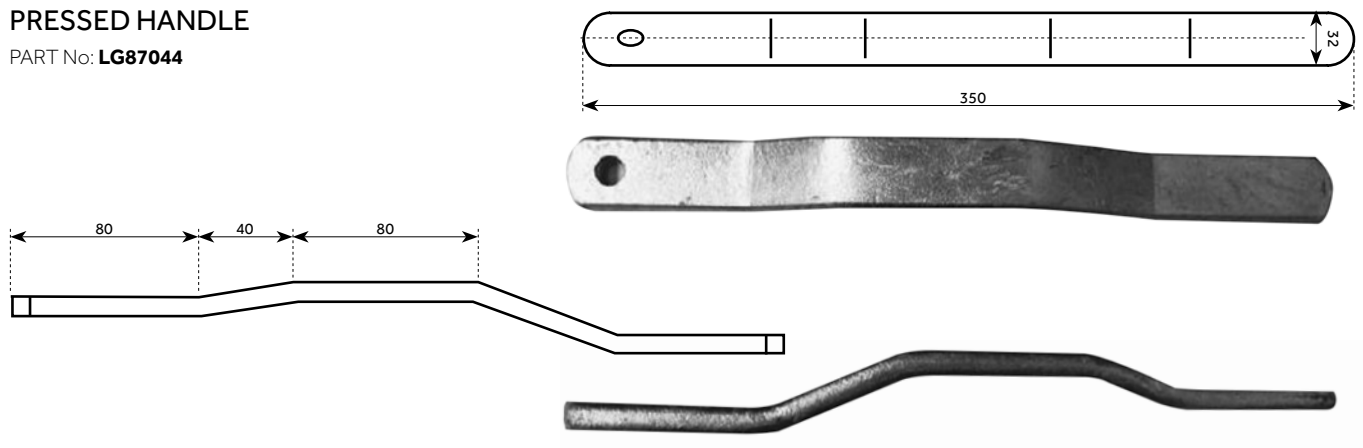
RETAINER/CUSTOM CATCH BUSH

PART No: **LG87031**



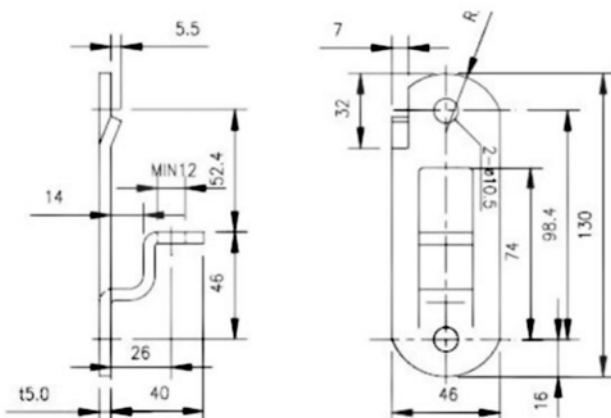
PRESSED HANDLE

PART No: **LG87044**



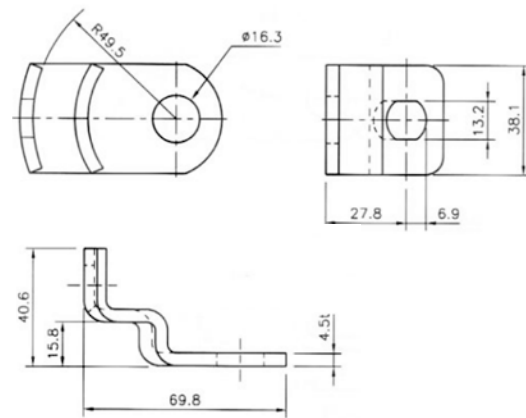
FLAT HANDLE RETAINER

PART No: **LG84011**



FLAT HANDLE CUSTOM CATCH

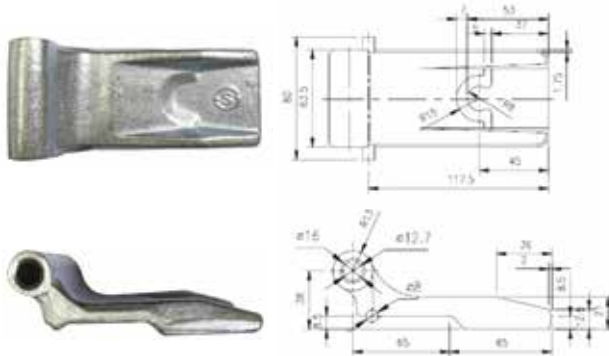
PART No: **LG84012**



DOOR HINGES: DRY

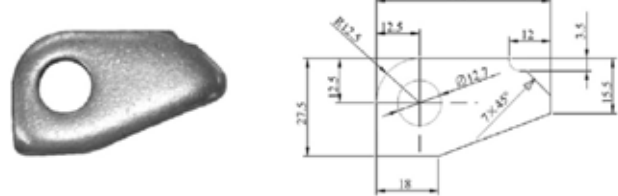
63.5MM DOOR HINGE

PART No: **LG82000**



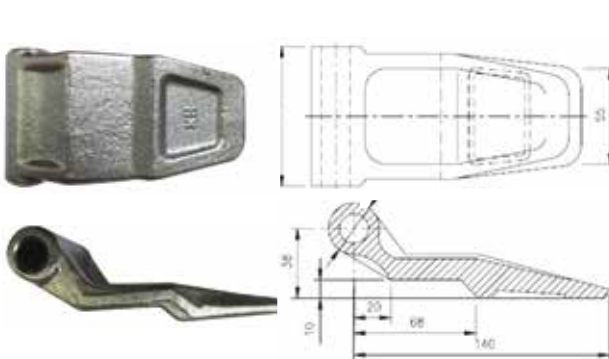
HINGE LUG

PART No: **LGLUG**



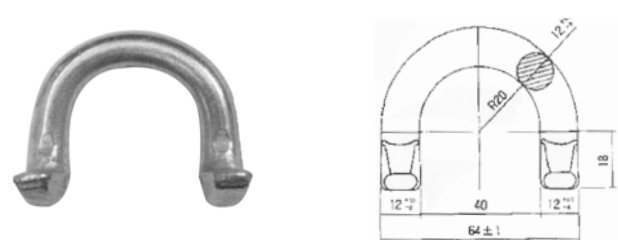
79MM DOOR HINGE

PART No: **LGH004**



INTERNAL LASHING RING

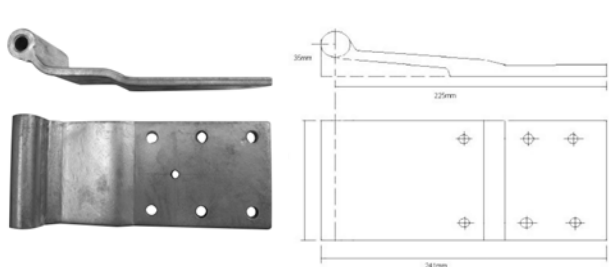
PART No: **LGLASHRING**



DOOR HINGES: PIN

101MM STEEL REEFER HINGE

PART No: **MHINGEB**



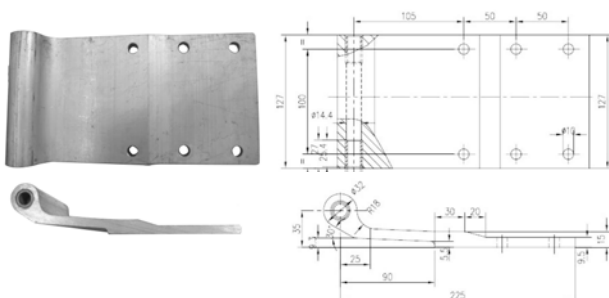
108MM HINGE PIN (DRY BOX)

PART No: **LG3002/2**



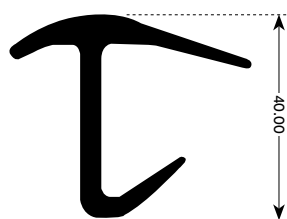
ALUMINIUM REEFER HINGE 127MM (CIMC)

PART No: **PC01003**

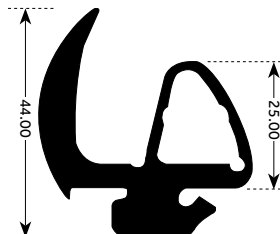


DOOR GASKETS

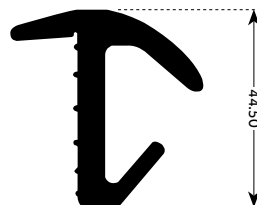
PART No: **GK950**



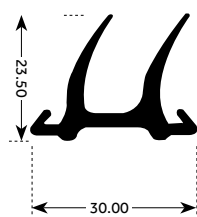
PART No: **GK-06-027**



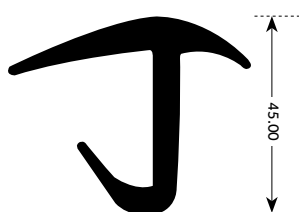
PART No: **GK955**



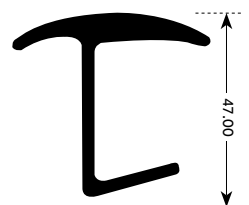
PART No: **GK958**



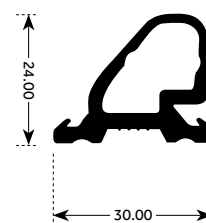
PART No: **GK960**



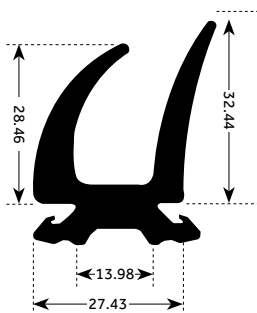
PART No: **GK969**



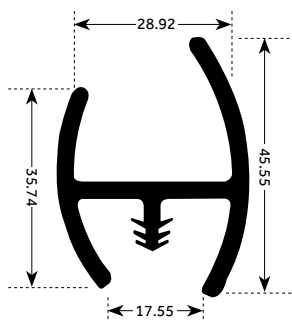
PART No: **GK965**



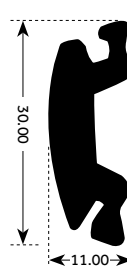
PART No: **GK966**



PART No: **GK967**



PART No: **GK-06-003**

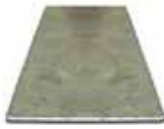


* All measurements are in millimetres

G-STRIPS

FLAT G-STRIP

PART No: **GALVSTRIP**
Galvanised Steel
25mm x 2400mm x 1.0mm



LOCTITE GASKET GLUE

LOCTITE GASKET GLUE (406) - 25ML BOTTLE
PART No: **SUP20**



CONTAINER DOOR TIE BACK

PART No: **LGDOORTIE**

Manufactured with strong wire rope as required by ISO requirement. Under American Occupational Health and Safety Rules, Door Tie Backs must be attached to all containers and be made of "Wire".



DOOR SECURITY VARIOUS SECURITY SEALS

For trucks, shipping containers, rail wagons, bonded stores, or general application. We offer several different types of security seals: All of these tamper evident seals are impossible to open without destroying or visibly damaging the seal, therefore preventing theft and/or contamination of goods in transit or storage.

- (1) SECURITY BOLT SEAL 4MM SHAFT
- (2) HIGH SECURITY BOLTS SEAL (11.7MM DIAM)
- (3) PLASTIC STRIP SEAL
- (4) ZIP TYPE PLASTIC SEAL

CC - NAMED ON REQUEST

CC-SEALBOLT

CC-SEALPLASTIC

CC-SEALBAG

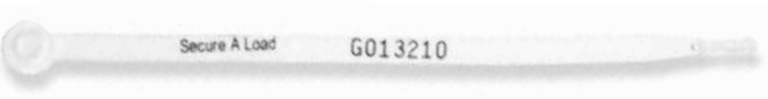
(1)



(2)



(3)



(4)



CONTAINER ACCESSORIES

Container Plywood is manufactured to comply.

Treated with Basileum SI-84 (with regard to the Australian regulations). This plywood meets all food grade requirements.

We can supply other plywood sizes, as well as Bamboo Eco plywood, upon request. Minimum order quantities and lead times apply for these product requests.

PLYWOOD FLOORING

PART No: **FPLY**

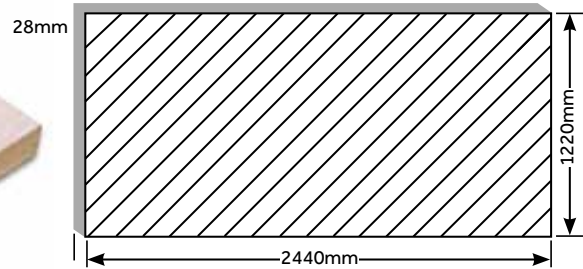
SHEET SIZE:

2440 X 1220 X 28 MM

SHIPPING CONTAINER

FLOOR LAMINATION

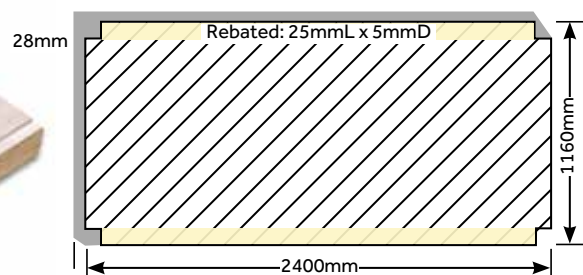
AQIS APPROVED - 19 LAMINATIONS



PLYWOOD REBATE FLOORING

PART No: **FPLY1160**

REBATED PLY FLOORING WITH NICHE
EDGING FOR SNUG FIT
FOR CONTAINER FLOOR
SIZE 1160MM X 2400 X 28MM
WITH REBATE EDGE OF 5MM X 25MM



FLOOR SCREWS

(1) PART No: **DS65L**

Large Head Floor Screw - 60mm Long x 16mm Head (900/Bx)

(2) PART No: **DS60W**

Self Tapping Floor Screw - 65mm Long x 12mm Head (1200/Bx)

(3) PART No: **PDRIVE**

Deck Screw Phillips Bit (P3) 31mm Long



MASKING TAPE

PART No: **MT48** - 48mm x 50mtr Roll



DECALS

INDIVIDUAL LETTERS AND NUMBERS

100MM - BLACK

PART No: **D100B- A-Z & 0-9**

100MM - WHITE

PART No: **D100W- A-Z & 0-9**

100MM - BLACK ON WHITE

PART No: **D100BW- A-Z & 0-9**

50MM - BLACK

PART No: **D50B- A-Z & 0-9**

50MM - WHITE

PART No: **D50W- A-Z & 0-9**

50MM - BLACK ON WHITE

PART No: **D50BW- A-Z & 0-9**



DECALS: WEIGHT PANELS

PART No: **DWPB24**
Standard 24 Ton. Avail. in Black

PART No: **DWP24**
Black, White, Black On White

MAX GROSS	24000 KG 52910 LB
TARE	2150 KG 4740 LB
MAX PAYLOAD	21850 KG 48170 LB

PART No: **DWPBMAX**
Left Side Only.
Black, White, Black On White

MAX GROSS
TARE
MAX PAYLOAD
CUCAP

DECALS: GENERAL

PART No: **DZEB**
9'6" Zebra Strip Decal



PART No: **DHMK**
Height Mark Decal 8'6"
Black On Yellow



PART No: **DHMK9**
Height Mark Decal 9'6"
Black On Yellow



PART No: **DCAUTION3**
Black On Yellow



CSC RE-INSPECTION LABEL

PART ROLL No: **CSCRELABEL**
Available in individual labels or rolls of 600 stickers

2011	2012	2014	2015	2016	2017						
REINSPECT BEFORE DATE PUNCHED					CSC						
JAN	FEB	MAR	APR	MAY		JUN	JUL	AUG	SEP	OCT	NOV

SMALL CSC INSPECTION PLATE

PART No: **CSC**
200mm Wide x 100mm High

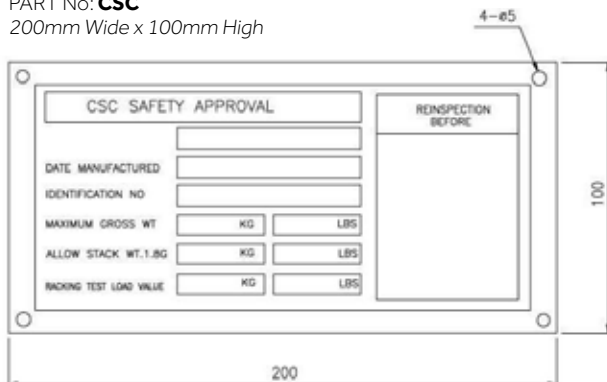


Diagram of a small CSC inspection plate (200mm wide x 100mm high). It features a 'CSC SAFETY APPROVAL' section with fields for DATE MANUFACTURED, IDENTIFICATION NO, MAXIMUM GROSS WT (KG/LBS), ALLOW STACK WT.1.BG (KG/LBS), and RACKING TEST LOAD VALUE (KG/LBS). A 'REINSPECTION BEFORE' section is also present. The plate is secured with 4-ø5 fasteners.

LARGE CSC INSPECTION PLATE

PART No: **CSCTIMBER**
200mm Wide x 250mm High

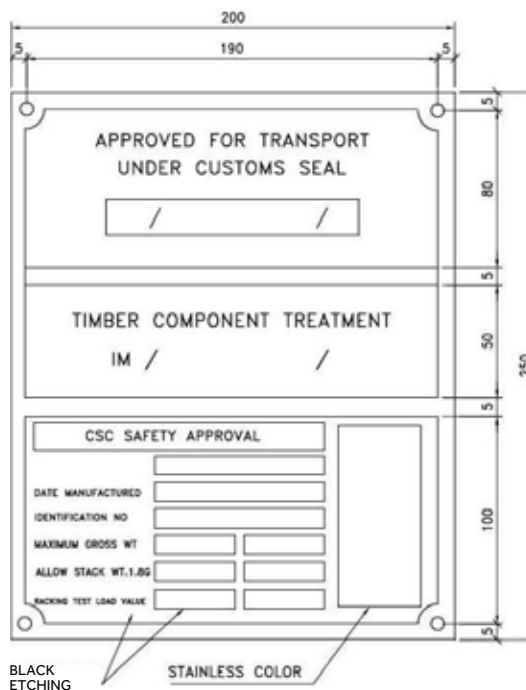


Diagram of a large CSC inspection plate (200mm wide x 250mm high). It includes a 'TIMBER COMPONENT TREATMENT' section with fields for IM and /. The 'CSC SAFETY APPROVAL' section contains fields for DATE MANUFACTURED, IDENTIFICATION NO, MAXIMUM GROSS WT, ALLOW STACK WT.1.BG, and RACKING TEST LOAD VALUE. The plate is secured with 4-ø5 fasteners. Labels indicate 'BLACK ETCHING' and 'STAINLESS COLOR'.

ALUMINIUM SHEET

All other sheet sizes are available upon request. Please contact your local branch for more information regarding your requirements.

PART No: **ALU1.0**

Aluminium Sheet - 1200mmx2400mm x 1.0mm

PART No: **ALU1.2**

Aluminium Sheet - 1200mmx2400mm x 1.2mm

PART No: **ALU1.6**

Aluminium Sheet - 1200mmx2400mm x 1.6mm

PART No: **ALU1.0PC**

Powder Coated Aluminium - 1200mmx2400mm x 1.0mm

PART No: **ALU1.6PC**

Powder Coated Aluminium - 1200mmx2400mm x 1.6mm



STAINLESS STEEL FLAT SHEET

PART No: **SS0.9**

Stainless Sheet G304 - 2B - 1200mm x 2400mm x 0.9mm

PART No: **SS1.2**

Stainless Sheet G304 - 2B - 1200mm x 2400mm x 1.2mm

PART No: **SS1.5**

Stainless Sheet G304 - 2B - 1200mm x 2400mm x 1.5mm



CORTEN FLAT SHEET

Sheet sizes may vary occasionally please check the size you require when ordering.

PART No: **ST1.6**

Corten Sheet - 1185 x 2380 x 1.6mm

PART No: **ST1.6H**

Corten Sheet - 1185 x 2700 x 1.6mm

PART No: **ST2.0**

Corten Sheet - 1225 x 2380 x 2.0mm

PART No: **ST2.0H**

Corten Sheet - 1225 x 2743 x 2.0mm

PART No: **ST3.0**

Corten Sheet - 1200 x 2400 x 3.0mm

PART No: **ST4.0**

Corten Sheet - 1320 x 2420 x 4.0mm

PART No: **ST4.5**

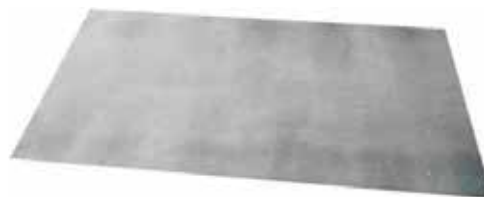
Corten Sheet - 1360 x 2420 x 4.5mm

PART No: **ST6.0**

Corten Sheet - 1302 x 2420 x 6.0mm

PART No: **ST6.0H**

Corten Sheet - 1460 x 2700 x 6.0mm



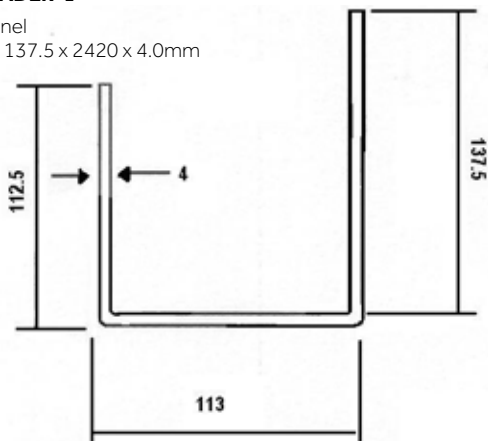
CORTEN HEADERS

CORTEN HEADERS

PART No: **HEADER-1**

Header Channel

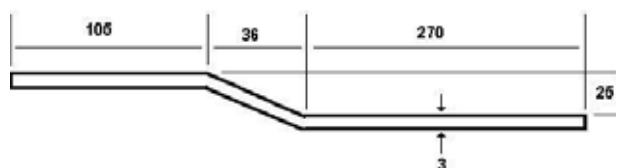
112.5 x 113 x 137.5 x 2420 x 4.0mm



PART No: **HEADER-0**

Header Plate

105 x 36 x 270 x 2420 x 4.0mm

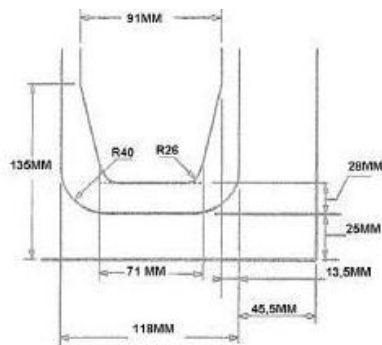


CORTEN FIVE CORRUGATION ROOF PANEL

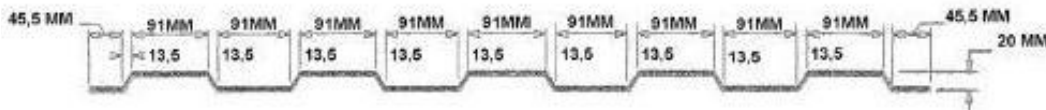
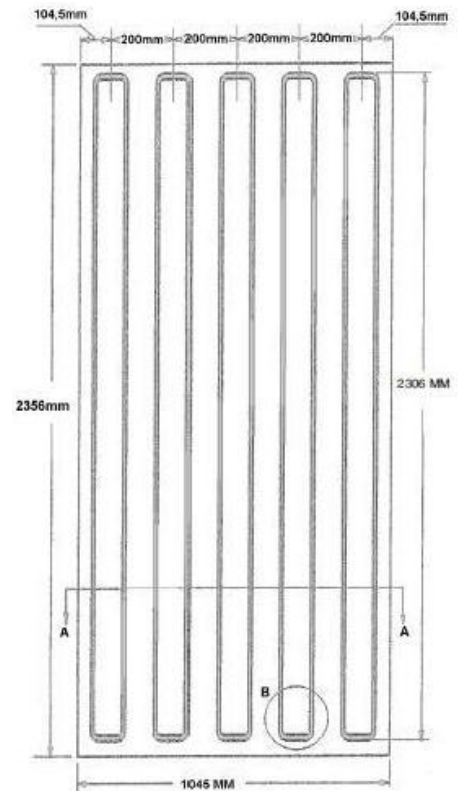
PART No: **ROOFP**
2.0mm fully primed



DETAIL B



SECTION A-A

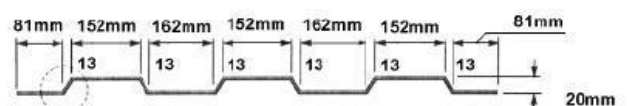
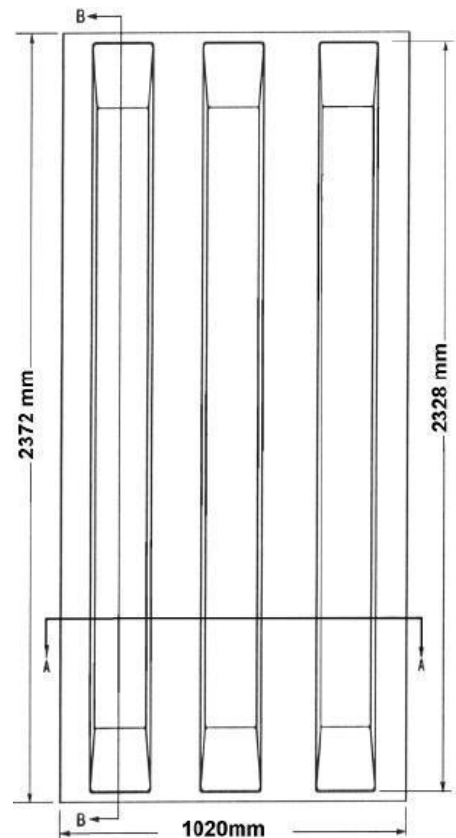
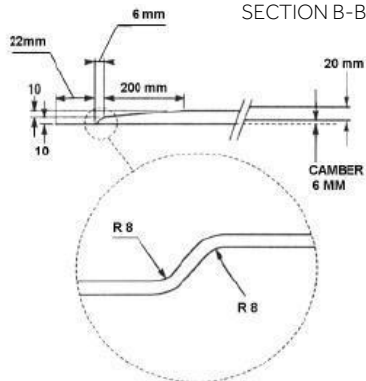


CORTEN THREE CORRUGATION ROOF PANEL

PART No: **ROOFP3**
2.0mm fully primed

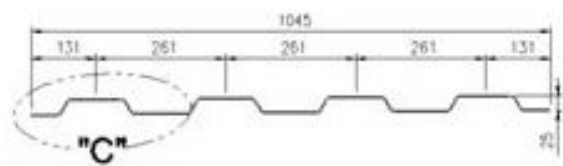
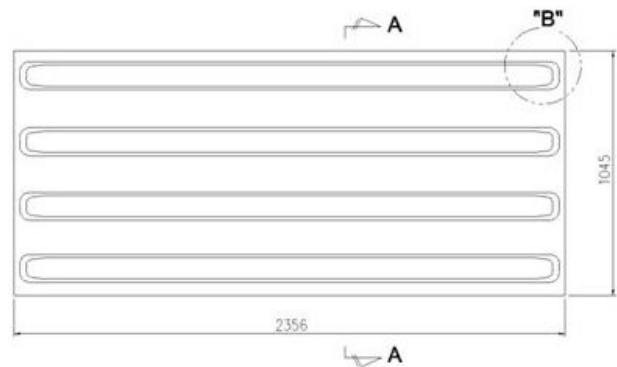
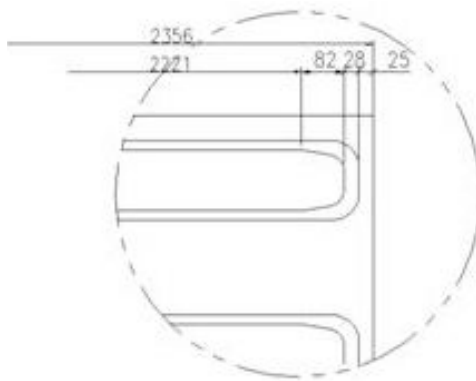
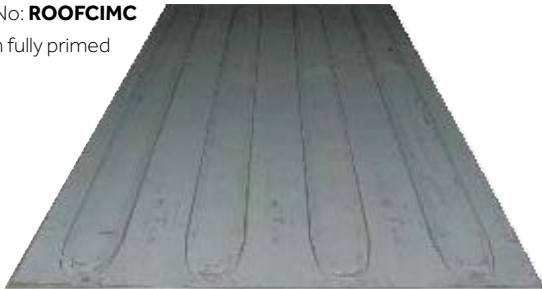


SECTION B-B



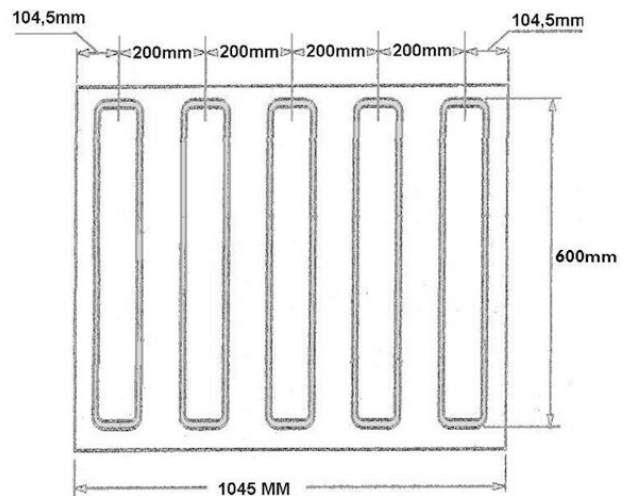
CORTEN FOUR CORRUGATION ROOF PANEL

PART No: **ROOFCIMC**
2.0mm fully primed

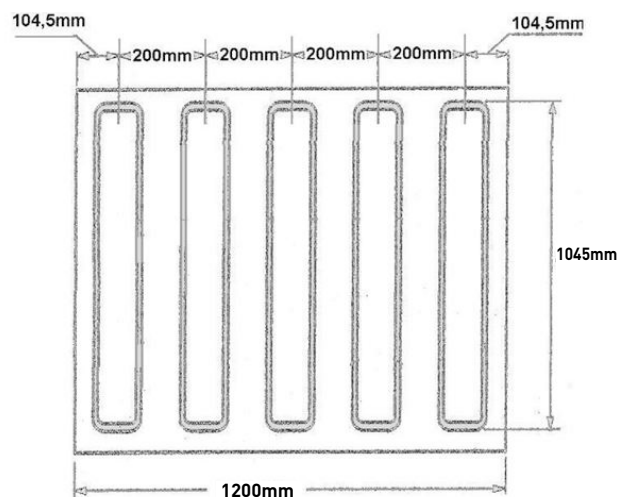
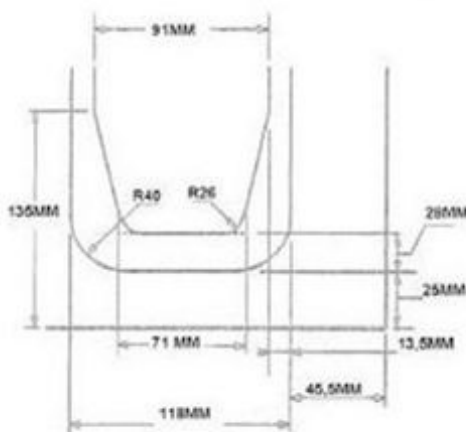


CORTEN FIVE CORRUGATION ROOF PATCH

PART No: **ROOFPE**
2.0mm fully primed
600mm x 1045mm



PART No: **ROOFPEP**
2.0mm fully primed
1045mm x 1200mm



CORTEN SIDE WALL PANELS

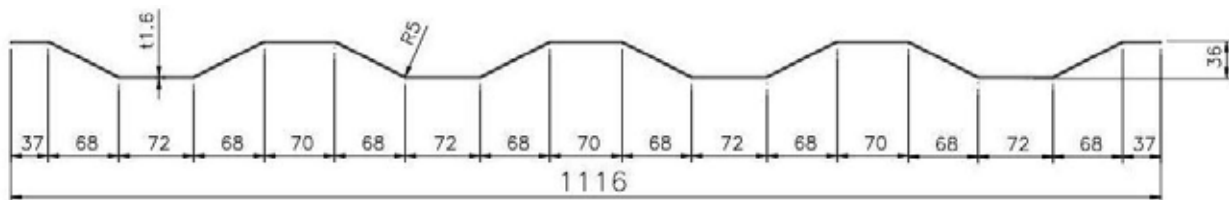
Available in 8'6" and 9'6"

PART No: **PSWA**

1.6mm x 2375mm x 1116mm

PART No: **PSWAHIGH**

1.6mm x 2742mm x 1116mm



CORTEN FRONT WALL PANELS

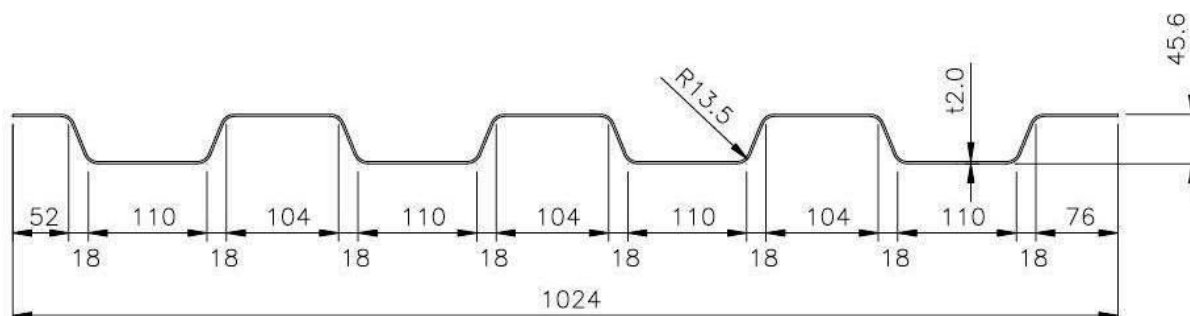
Available in 8'6" and 9'6"

PART No: **PFR**

2.0mm x 1024mm x 2400mm

PART No: **PFR9**

2.0mm x 1024mm x 2700mm

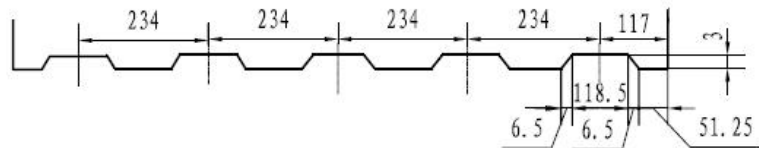
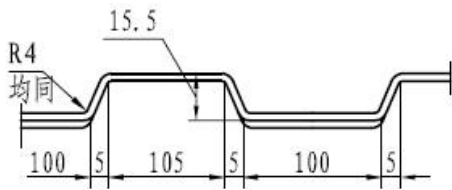
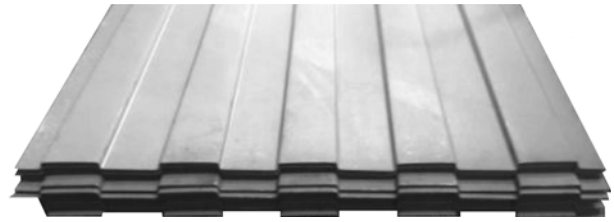


CRONOS SIDE WALL PANEL

PART No: **PCRONOS**

2507mm long x 1075mm wide x 2.0mm Corten

Made on Request



CORTEN CHANNELS/ANGLES

CORTEN CHANNEL

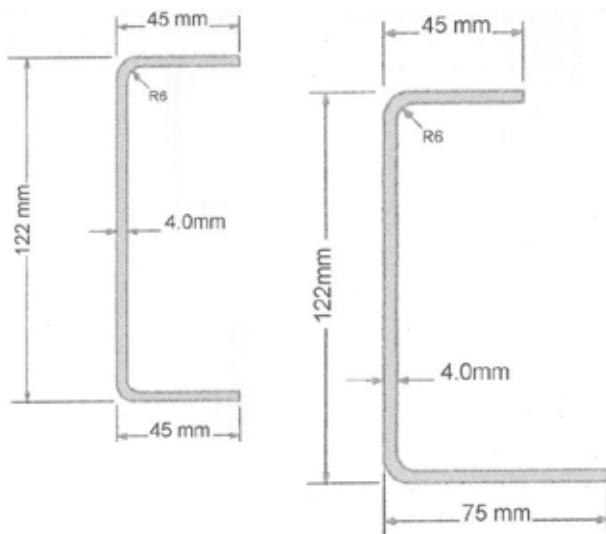
Corten channels are available in standard sizes listed below.
Other sizes available on request.

PART No: **C4512045**

Corten Channel - 45x122x45x2350x4.0mm

PART No: **C7512045**

Corten Channel - 75x122x45x2350x4.0mm



CORTEN ANGLES

Corten angles are available in standard sizes listed below.
Other sizes available on request.

PART No: **A120/50**

Corten Angle - 120x50x2350x4.0mm

PART No: **A50/306MM - J BAR**

Corten Angle - 50x30x2350x6.0mm



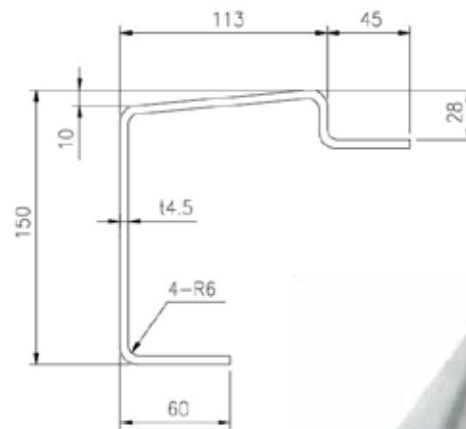
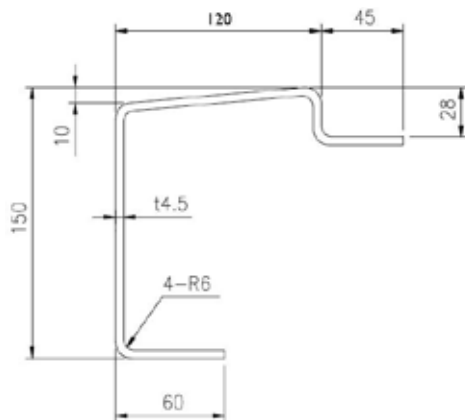
CORTEN DOOR SILLS

PART No: **SILLR**

Corten Rear (Door) Sill - 113mm
Top

PART No: **SILLR120**

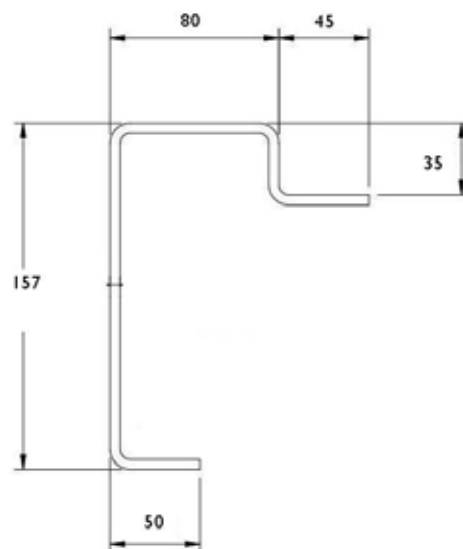
Corten Rear (Door) Sill - 120mm
Top



CORTEN FRONT SILLS

PART No: **SILLF**

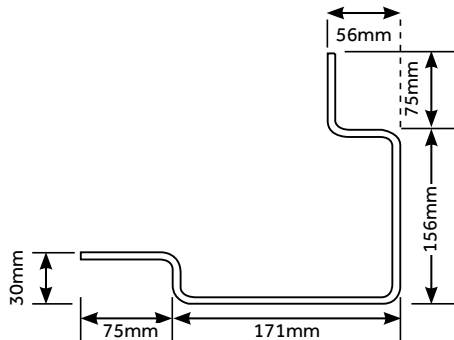
Corten Front Sill - 80mm Top



CORTEN CORNER POSTS - FRONT

PART No: **CNRPOSTH**

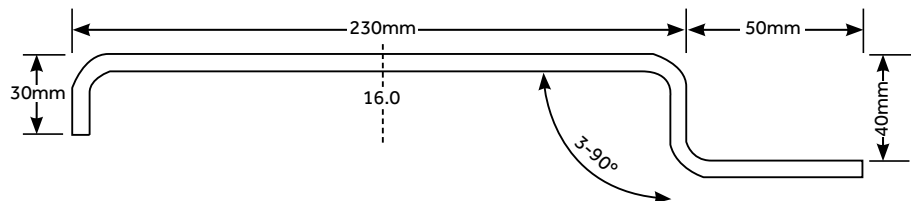
Corten Corner Post High Cube - 9'6" - 2745mm Long



CORTEN CORNER POSTS - REAR

PART No: **CNRPOSTRH**

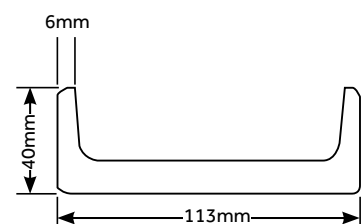
Corten Rear Corner Post High Cube 9'6" - 2700mm Long



CORTEN CORNER POSTS - REAR INSERTS

PART No: **CNRPOSTIH**

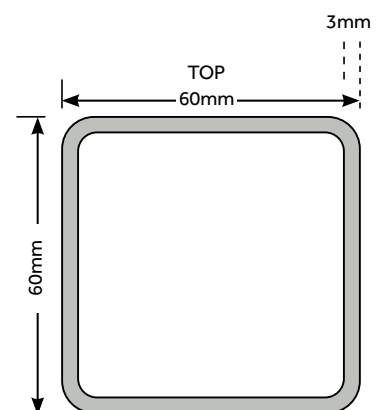
Corten Rear Corner Post Insert High Cube - 40x113x40x2657mm



CORTEN - TOP RAILS

PART No: **TOPRAIL**

Corten Steel Top Rail - Blasted and Primed Square Tube
60mm x 60mm x 5720mm x 3.0mm



CORTEN BOTTOM SIDE RAIL - REEFER

PART No: **BSIDER**

PART No: **BSIDER2**

CortenSteel - 6000mm Long x 4.0mm

ALUMINIUM REEFER FLOORING

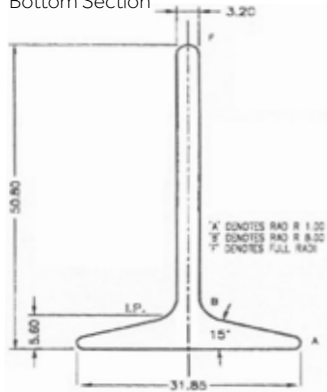
Both sections are available in 3000mm lengths.

PART No: **RFAFT**

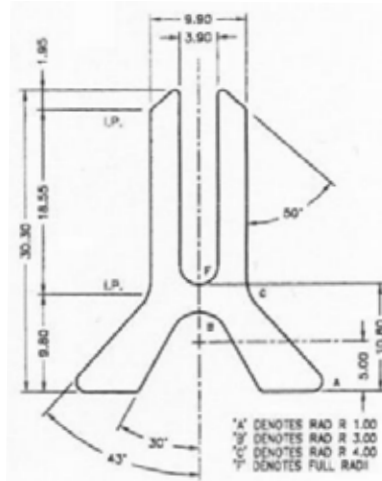
Top Section

PART No: **RFAFB**

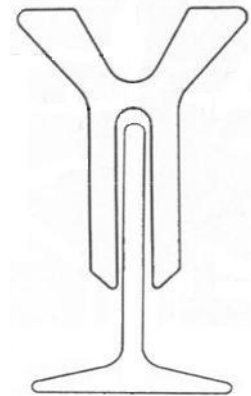
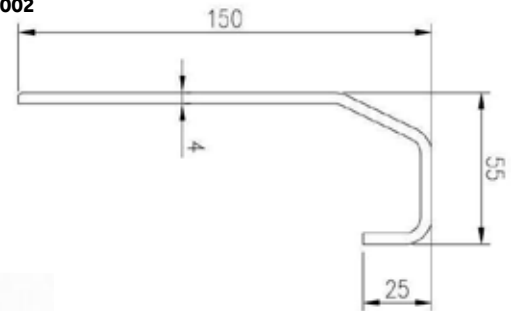
Bottom Section



TOP SECTION
RFAFT



BOTTOM SECTION
RFAFB



REEFER COVINGS

VC DOOR MOULDINGS

PART No: **RFDM01**

PART No: **RFDM03**

PART No: **RFDM04**

PART No: **RFDM05**

PART No: **RFDM12**

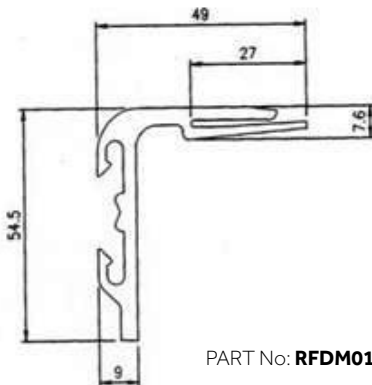
PART No: **RFDM08**

PART No: **RFDM11**

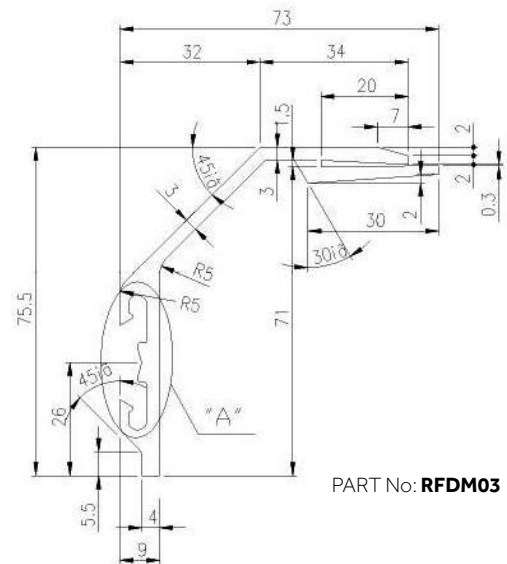
PART No: **RFDM01**

PART No: **RFDM02**

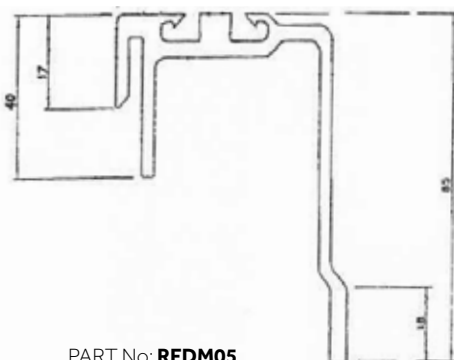
PART No: **RFDM03**



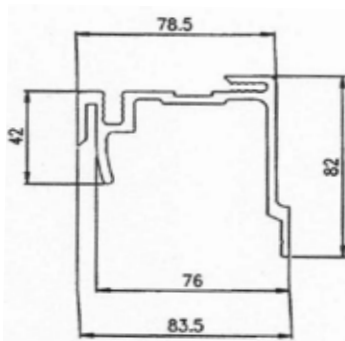
PART No: **RFDM01**



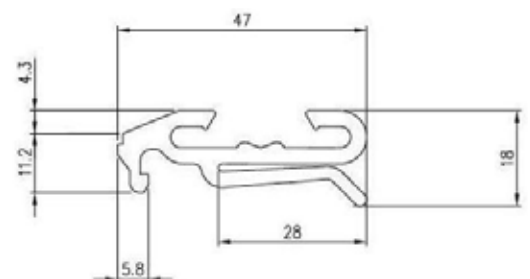
PART No: **RFDM03**



PART No: **RFDM05**



PART No: **RFDM04**



PART No: **RFDM12**

KAZOOS

Durable black rubber drain hose for refrigerated shipping containers.
Available in two sizes.

PART No: **KAZOOL**

KAZOO - LARGE: 85mm Long

PART No: **KAZOO**

KAZOO - SMALL: 80mm Long



DRAIN PLUGS

PART No: **RFDSALI**

REEFER DRAIN SYSTEM - ALUMINIUM PIPE

PART No: **RFDSAD**

REEFER DRAIN SYSTEM - AUTO DRAIN INNER

PART No: **RFDSP**

REEFER DRAIN SYSTEM - PLASTIC EXIT PIECE

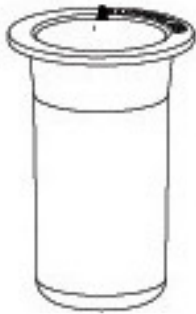
PART No: **DP32**

38mm (TOP) 32mm (BASE)

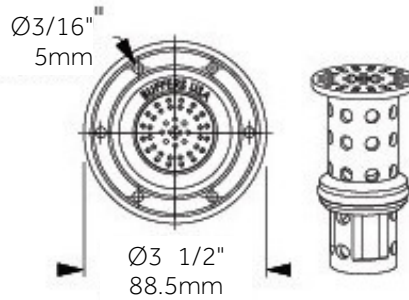


DP32 DRAIN PLUG

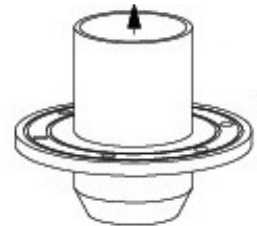
PART No: **RFDSALI**
REEFER DRAIN SYSTEM



PART No: **RFDSAD**
AUTO DRAIN INNER



PART No: **RFDSP**
PLASTIC EXIT PIECE



FOAM PRODUCTS

POURING FOAM

PART No: **FOAMHP40**

ISO PART A&B POURING FOAM

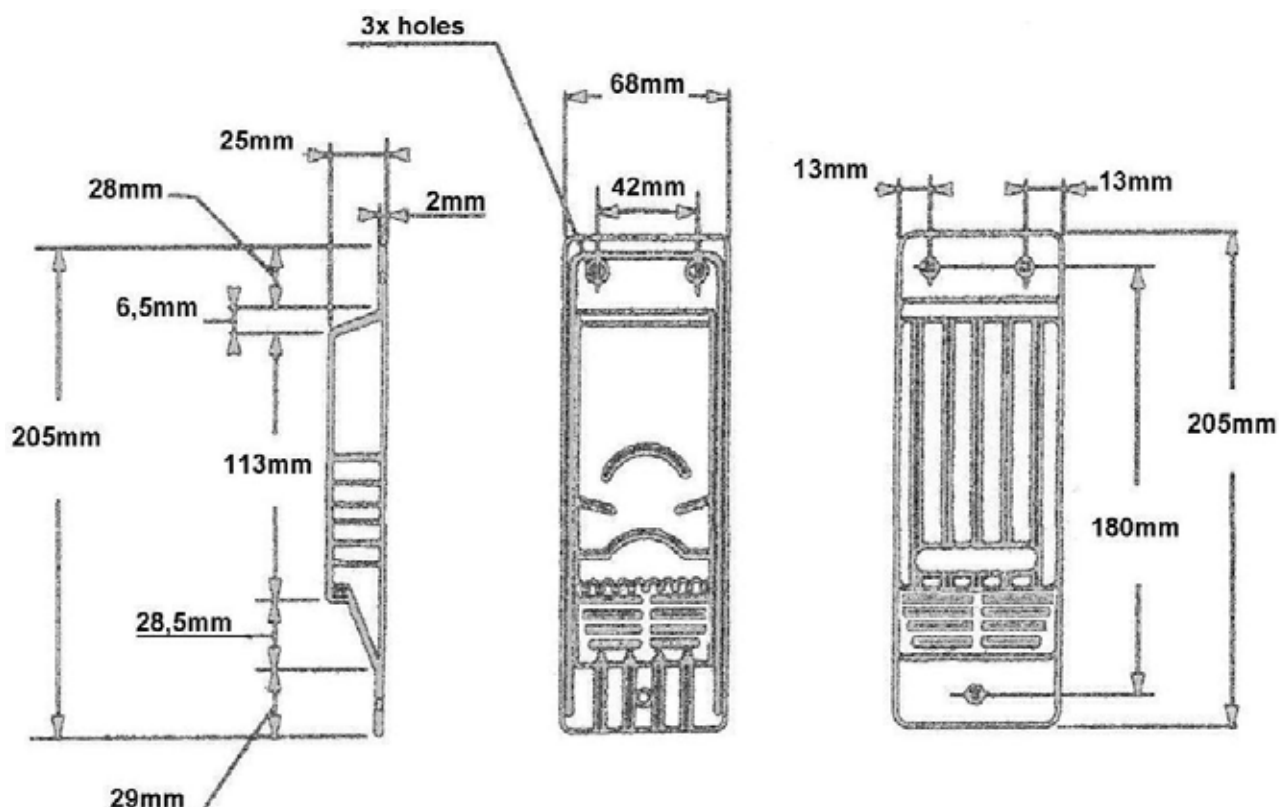
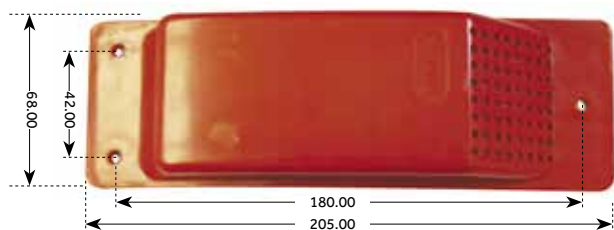
Free Rise Density = 32KG/M3



SMALL VENT FOR USE INSIDE EXTERIOR CORRUGATION

PART No: **VENTS**

Colour may vary



TARPAULIN PRODUCTS

COMPLETE TARPAULIN EYELETS - ROUND

PART No: **TARPEYELET**

SUPPLIED C/W FRONT AND BACK



TARP WIRE

PART No: **TARPCLIP**
END CLIP SET



TARPAULIN WIRE

PART No: **TARPWIRE20 & TARPWIRE40**
AVAILABLE IN 20' & 40'

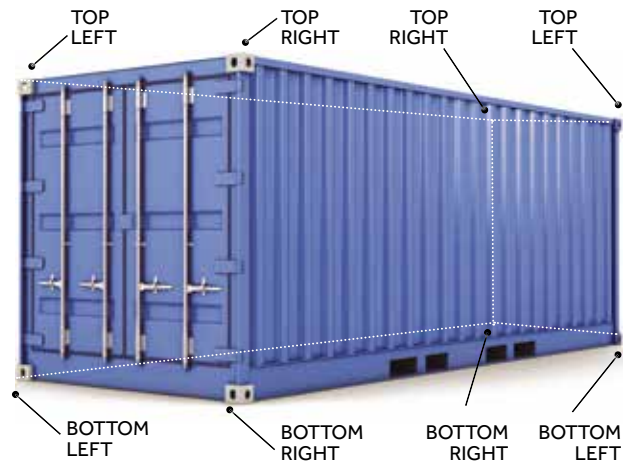


SHIPPING CORNER CASTINGS

Weight 11.50 kg

High quality Cast Steel Aldur s45. Shotblasted, primed and machined on six sides.

Manufactured in accordance with ISO 1161



PART No: **CCBL**
CORNER CAST
BOTTOM LEFT



PART No: **CCBR**
CORNER CAST
BOTTOM RIGHT



PART No: **CCTL**
CORNER CAST
TOP LEFT



PART No: **CCTR**
CORNER CAST
TOP RIGHT



CONTAINER STRAPS

PART No: **RT-TTD/C3**
CONTAINER TIEDOWN STRAP
9MX50MMXLC2T

Container Tiedown Strap
9mx50mmxLC2T



ODOUR NEUTRALISER

**SHIPPING CONTAINER ODOUR
NEUTRALISER**

PART No: **EPOLEON5**

Perfect for removing the after smell of
food or fish products from containers.
Available in 5ltr containers.
Various sizes and strengths available
upon request.



CARGO JACKING BARS

Cargo bars offer strong support for your cargo. Cargo bars expand to fit tightly against the sides of a container or truck walls and lock in place without excessive pressure.

Cargo bars feature 2" x 4" bolt-on padded feet for no-slip traction once they are extended to appropriate pressure. These adjustable round steel tube load bars are made of high-quality steel and adjust from 2175mm to 2900mm.

PART No: **RT-JACKBAR**

JACKING BAR - WWL 600kg



LEATHER RIGGERS GLOVES

PART No: **GLOVEDRIVEM**

MEDIUM - Cowhide leather riggers gloves

PART No: **GLOVEDRIVEL**

LARGE - Cowhide leather riggers gloves

PART No: **GLOVEDRIVEXL**

X-LARGE - Cowhide leather riggers gloves



WELDING GLOVES

PART No: **GLOVEWELDING**

High quality welding gloves

NEUTRAL SILICONE

- Low odour
- Non Corrosive
- Permanently flexible
- Form waterproof/weatherproof seal

PART No: **SILICONEB**

Black Silicone

PART No: **SILICONEC**

Clear Silicone

PART No: **SILICONEG**

Grey Silicone



SIKAFLEX SILICONE

Sikaflex is a polyurethane sealant/adhesive that is available in many grades in a cartridge or sausage form. This item is a general purpose sealant that is great for use on metal, rubber, wood and plastic. This product is available in many grades and strengths.

Available in 3 colours:

PART No: **SIKA221G**

Grey

PART No: **SIKA221B**

Black

PART No: **SIKA221W**

White

PART No: **SIKATAC**

BLACK 600ml Sausage



ABRASIVES: CUTTING/GRINDING

- PART No: **AB115X1** Abrasives Cutting Disc 115x1
 PART No: **AB115X2.5** Abrasives 115mm X 2.5mm Cutting 4.5"
 PART No: **AB115X6** Abrasives 115mm X 6mm Grinding. 4.5"
 PART No: **AB125X1** Abrasive Cutting Disc (SS) 125x1x22
 PART No: **AB125X2.5** Abrasives 125mm X 2.5mm Cutting
 PART No: **AB125X6.8** Abrasives 125mm X 6.8mm Grinding
 PART No: **AB230X2.5** Abrasives 230mmx2.5mmx22mm Cutting
 PART No: **AB230X6.8** Abrasives 230mm X 6.8mm Grinding
 PART No: **AB356X3** Abrasives 356mmX3mmx25.4 (drop saw)



OTHER

PART No: **BRUSHCUP2** - Cup Brush Twist Knot Type 75x14x2.0

ABRASIVES: SANDING

SANDING DISCS - Various Sizes Available

PART No: **SD180P24**

- Sanding Disc 180 x 22mm 24 Grit.(7inch)



DRILL BITS

All other drill bit sizes are available upon request. Please contact your local branch for more information regarding your requirements.

PART No: **DRILL4.9** 4.9mm Drill Bit

PART No: **DRILL5.0** 5.0mm Drill Bit

PART No: **DRILL5.2** 5.2mm Drill Bit

PART No: **DRILL5.5** 5.5mm Drill Bit

Complete Range up to 10mm Available



NUTS & BOLTS

PART No: **BOLT10/25**

PART No: **BOLT10/35**

Zinc Plated Nut & Bolt set - 10mm x 35mm



FASTENERS: RIVETS

We currently stock a large range of rivets. Below is a list of the most common rivets we stock. For all other rivets please contact your local sales representative so we can source this product for you.

BLIND RIVETS

PART No: **RVPEEL610**

Blind Rivet Large Flange 4.8/16.7mm

PART No: **RVPEELLF10**

Blind Rivet Large Flange 4.8/23.8mm



SEALED RIVETS

PART No: **RVSRDU-0604** - 3/16 Sealed End Rivet (Stainless)

PART No: **RVTA65** - 3/16 Sealed End Rivet

PART No: **RVTA68** - 3/16 Sealed End Rivet

PART No: **RVTA610** - 3/16 Sealed End Rivet

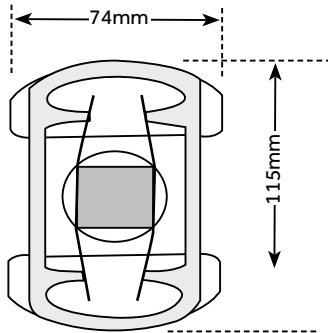


TWISTLOCK - FLATRACK

PART No: **FR4C1026**

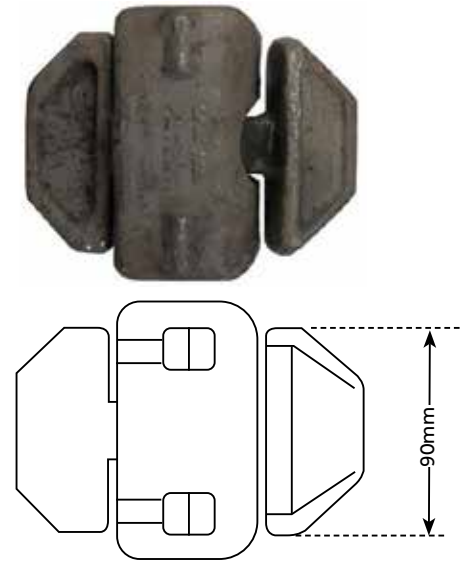
Forged Steel Body with one piece head and tail

Large operating clearances internally to overcome dirt and corrosion.



Stainless Steel Leaf
Springs

Low temperature grease
applied as standard



TWISTLOCK - MARINE

PART No: **MLT1-2L**

MARINE STACKING TWISTLOCK

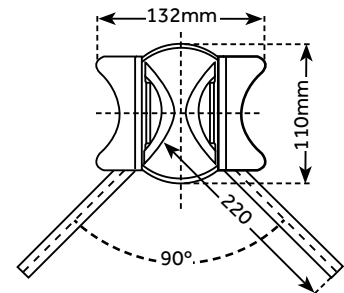
(Double stacking)

SECURING CONTAINERS WHEN STACKED

TWISTLOCK HOT DIPPED GALVANISED

WEIGHT: 5.8KG SWL: 25 TON

BL: 50 TONS



PART No: **MLT4-1L**

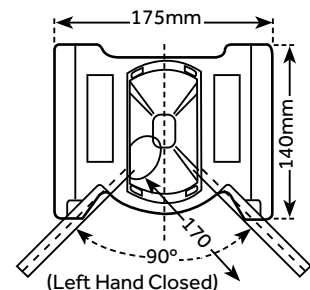
DOVETAIL TWISTLOCK

LEFT HAND LOCKING. TWISTLOCK

HOT DIPPED GALVANISED

WEIGHT: 5.8KG SWL: 25 TON

BL: 50 TONS

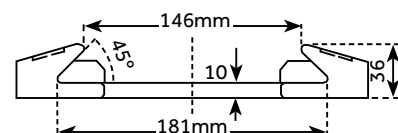


PART No: **MLDF-1B**

BASE TO DOVETAIL TWISTLOCK

CAST STEEL DOUBLE

SAFE WORKING LOAD OF 25,000KG

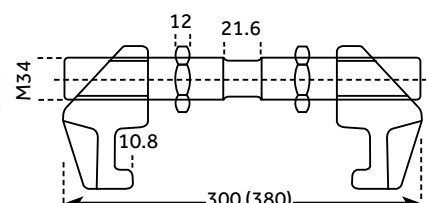


PART No: **MLBF-1**

BRIDGE FITTING FOR HORIZONTAL
CONTAINER LOCKING

GALVANISED

SAFE WORKING LOAD OF 5000KG



DUNNAGE BAGS

CC-DBAGFORKLIFT

FORKLIFT COMPRESSOR

Introducing the newest dunnage air bag inflation technology, the Forklift Inflator. It is easily installed on any forklift and is powered by the forklift battery. Once installed, simply flip the switch to fill dunnage air bags anywhere inside a trailer or container.

- Can be used on Lightweight airbags
- Decreases load time
- No air lines or air carts needed
- No recharging or downtime
- No dragging long air lines or air carts
- Runs off forklift battery power

SPECIFICATIONS:

Max Pressure 1.5 PSI

Hose Length- 15 ft

Unit Weight- 7.5 lbs



CC-DBAGGUN

DUNNAGE BAG INFLATION GUN

BLACK S/FLOW SF1000

CC-DBAGGUN2

DUNNAGE BAG INFLATION GUN

BLUE TURBO TF3000



Unparalleled dunnage airbag inflation speed and an innovative safety feature that significantly reduces inflation time and labor costs. Our inflator fills dunnage air bags faster than the industry standard.

The SuperFlow™ inflator offers a unique feature that prevents over-inflation. Once an airbag has reached its optimal pressure, air automatically diverts through the back of the inflator, indicating to the user, that the airbag has reached its optimal PSI.

The industrial grade plastic body is built to withstand the wear and tear of a loading environment.



DISPOSABLE PAPER DUNNAGE AIR BAG

2 PLY

CC-DBAGP1X1

DUNNAGE BAG

PAPER 2 PLY 900 X 1200MM

CC-DBAGP1X2

DUNNAGE BAG

PAPER 2 PLY 900 X 2100MM

CC-DBAGP2X2

DUNNAGE BAG

PAPER 2 PLY 1200 X 2100MM



4 PLY

CC-DBAGP4PLY2

DUNNAGE BAG

PAPER 4 PLY 900 X 2100MM (100)

CC-DBAGP4PLY3

DUNNAGE BAG

1200 X 2400MM 4PLY FF (75)



POLY WOVEN

CC-DBAGPPW1

DUNNAGE BAG

POLY WOVEN 900 X 1200MM (500)

CC-DBAGPPW2

DUNNAGE BAG

POLY WOVEN 900 X 2100 - 350

CC-DBAGPPW3

DUNNAGE BAG

POLY WOVEN 1220 X 2140MM - 300



BUDGET RANGE BAGS

CC-DBAGV0

DUNNAGE BAG

SAL PAPER 900MM X 1200MM

CC-DBAGV1

DUNNAGE BAG

SAL PAPER 920MM X 2100MM (270)

CC-DBAGV2

DUNNAGE BAG

SAL PAPER - 1220 X 2100MM



NON TOXIC DESICCANTS

THE NORDIC DESICCANT BAG SADDLEBAG, PICCOLO & BLANKET

This NON-TOXIC desiccant bag protects your containerised cargo from moisture damage. It eliminates humidity related problems in shipment and storage.

- Protects powdered and packaged dairy goods from mold, mildew, solidifying, fungus, corrosion and rust caking caused by humidity.
- High Absorption rates - up to 2 times its own weight
- Non-Toxic - approved to be used with food products
- Reduces Cargo insurance claims
- Fits into container corrugation grooves
- Cargo protected for 3 months
- Leak Proof 100%

**FDA APPROVED
REGULATORY COMPLIANT
COST EFFECTIVE**



Most desiccants on the market harm both the atmosphere and the environment through their disposal. The Nordic desiccant is ENVIRONMENTALLY FRIENDLY. **All material is recyclable.**



"Nordic Dry has been verified to be 100% Non-Toxic by the ALS Laboratory Service and specifically free of Acrylamide, which can be prevalent in some starch based desiccants. Nordic is approved for use in all transportation of food and agricultural products."

ANC DISTRIBUTION NEW ZEALAND LIMITED TERMS OF TRADE

1. **Prices** - The prices stipulated by ANC Distribution New Zealand Limited (hereafter referred to as the 'Company') shall be increased or decreased by the amount of any increase or decrease in the cost of materials, transport, labour, customs and other duties, insurance and other factors affecting the cost of production and/or delivery due to circumstances beyond the control of the Company between the date of quotation and the date of delivery.
All pricing is in New Zealand dollars only.
2. **Terms** - The terms of payment are nett cash on the 20th day of the month following that in which the goods are despatched by the Company to the Purchaser. Interest may be charged from that date at such a rate as may be set from time to time by the Company.
3. **Delivery** - Delivery shall be deemed complete when the Company gives possession of the goods to a carrier for delivery to the place indicated as the delivery address, or for delivery to a main airport, port or railway station if the goods are to be delivered by air, sea or rail. If the Purchaser fails to accept the goods by the delivery date specified or such later date as the Company is able to make delivery, the Purchaser shall pay reasonable storage costs until the Purchaser accepts the goods. The Company shall not be liable for any damage or loss whatsoever arising from any failure to deliver or delay in delivery of the goods, caused by any event beyond the Company's control.

The Company reserves the right to deliver the goods by instalments and each instalment shall be deemed to be a separate contract subject to the same conditions as the main contract. Should the Company make defective delivery of or fail to deliver one or more instalments this shall not entitle the Purchaser to repudiate the main contract.

Expected delivery times for product that is ex stock.
North Island 2-3 working days from receipt of payment
South Island 4-7 working days from receipt of payment

4. **Returns / Exchanges**
We understand that sometimes you may need to return a product you have purchased, to assist you, we have set out below our Returns Policy that you should know.

Our Returns Policy includes the rights you have under the New Zealand Consumer Law and other relevant laws.

Your Rights under the New Zealand Consumer Law - Our goods come with guarantees that cannot be excluded under the New Zealand Consumer Law. You are entitled to a replacement or refund for a major failure and for compensation for any other reasonably foreseeable loss or damage. You are also entitled to have the goods repaired or replaced if the goods fail to be of acceptable quality and the failure does not amount to a major failure.

1. You shall inspect the Goods on delivery and shall within seven (7) days of delivery (time being of the essence) notify ANC Distribution New Zealand Limited of any alleged defect, shortage in quantity, damage or failure to comply with the description or quote.
2. You shall also afford ANC Distribution New Zealand Limited the opportunity to inspect the Goods within a reasonable time following delivery if you believe the Goods are defective in any way.
3. If you shall fail to comply with these provisions the Goods shall be presumed to be free from any defect or damage. For defective Goods, which ANC Distribution New Zealand Limited has agreed in writing that you are entitled to reject, ANC's liability is limited to either (at the ANC's discretion) replacing the Goods or repairing the Goods. Returns will only be accepted provided that:
 - (a) You have complied with the provisions outlined above, and
 - (b) where the Goods are unable to be repaired, the Goods are returned at your cost within thirty (30) days of the delivery date, and
 - (c) ANC Distribution New Zealand Limited will not be liable for Goods which have not been stored or used in a proper manner, and
 - (d) the Goods are returned in the condition in which they were delivered and with all packaging material, brochures and instruction material in as new condition as is reasonably possible in the circumstances.
4. ANC Distribution New Zealand Limited may (at their sole discretion) accept the return of Goods for credit but this may incur a handling fee of up to fifteen percent (15%) of the value of the returned Goods plus any freight costs.
5. Where a failure does not amount to a major failure, ANC Distribution New Zealand Limited is entitled to choose between providing you with a repair, replacement or other suitable remedy.
6. Your rights under the New Zealand Consumer Law are not limited by a defined time. However, the New Zealand Consumer Law does recognise that the relevant time period can vary from product to product, depending on factors such as the nature of the product

and the price. ANC Distribution New Zealand Limited adopts the same approach. As you can appreciate, the type of remedy we can offer you may also vary depending on how long it takes you to return the product to us. Goods may be returned to ANC Distribution New Zealand Limited provided that:

- (i). You (the purchaser) must return your goods within 14 days of the initial request.
- (ii). A return authorisation is not a credit note, and it is not an agreement for replacement or refund, this will be determined upon the receipt of your goods to the designated ANC Distribution New Zealand Limited branch.
- (iii). Prior approval or a reference 'return authorisation number' must be provided by ANC Distribution New Zealand Limited
- (iv). Refunds will only be processed if the goods are returned in original packaging and in a re-sellable condition except where special arrangements have been made.
- (v). The buyer is responsible for all freight costs except where special arrangements have been made or goods have been incorrectly supplied.
- (vi). All necessary information is supplied by you the purchaser.
- (vii). If the above conditions are not met, ANC Distribution New Zealand Limited reserves the right, at its own discretion to cancel and dishonour a 'return authorisation' request

5. Risk & Title

- (a) The risk in the goods supplied by the seller to the Purchaser shall pass to the Purchaser upon delivery, but the ownership in them shall not pass to the Purchaser until the Purchaser has paid for the same and discharged all outstanding indebtedness to the seller whatsoever. Receipt by the seller of any cheque or other bill of exchange or promissory note shall not be deemed payment or conditional payment until the same has been honoured or cleared and until such time shall not prejudice or affect the seller's rights, powers or remedies against the Purchaser and/or the goods.
- (b) In the event that the Purchaser is not purchasing the goods for the purchaser's own use or consumption, then until payment in full of the purchase price and all outstanding indebtedness has been made, the Purchaser acknowledges and agrees as follows:
 - I. that the goods supplied are held by the Purchaser as bailee to be sold by it as agent for and on behalf of the seller,
 - II. that the Purchaser shall if directed by the seller, store the goods supplied in such a way that it is clear that they are the property of the seller,
 - III. that the Purchaser hereby irrevocably gives the seller, its agents and servants, leave and licence without the necessity of giving any notice to enter on and into any premises occupied by the Purchaser to search for and remove any of the goods supplied to or in which the seller has ownership as aforesaid without in any way being liable to the Purchaser or any person or company claiming through the Purchaser.

6. **Warranty** - All products manufactured by ANC Distribution New Zealand Limited are warranted to be free from defects in materials or workmanship for a period of 3 (three) months from date of shipment. During this period ANC Distribution New Zealand Limited will at its option repair or replace without charge any products or part thereof found to be defective in material or workmanship. All other products will be covered by the supplier or manufacturer's warranty. This warranty does not extend to any product which has been subject to abuse, misuse, negligence, accident, alteration or unauthorised repair. Defective products must be returned to ANC Distribution New Zealand Limited, 5a Hunters Park Drive, Three Kings, Auckland 1024 within the above period, transportation prepaid. ANC Distribution New Zealand Limited will bear the cost of return transportation.

THIS WARRANTY IS IN LIEU OF ALL OTHER WARRANTIES EXPRESS OR IMPLIED BUT NOT LIMITED TO ANY IMPLIED WARRANTY OR MERCHANTABILITY OR FITNESS FOR ANY PARTICULAR PURPOSE. IN NO EVENT WILL ANC DISTRIBUTION NEW ZEALAND LIMITED BE LIABLE FOR SPECIAL, INDIRECT OR CONSEQUENTIAL DAMAGES OR LOSS OF VEHICLE, CARGO OR PROFITS.

7. **Default in Payment** - If the Purchaser defaults in the due payment of the Invoiced price, the Company may
 - (a) terminate the contract and in this event the Company shall enter upon the premises and take possession of the goods and the Company may resell such goods and apply the proceeds in the abatement of the Invoiced price; or
 - (b) retain the services of a debt collection agency/attorney to recover the payment and costs incurred in the recovery of the payment shall be for the account of the Purchaser.
8. **Contract** - The terms set out here are the only term conditions and warranties of this Contract, unless otherwise agreed in writing by the parties.



ANC DISTRIBUTION New Zealand Limited

Free Phone: 0508 426 272

sales@ancdist.co.nz

www.ancdist.co.nz

facebook.com/ancdist.nz

LOCATIONS

AUCKLAND: A: 17 Andrew Baxter Drive,
Airport Oaks, Auckland 2022

CHRISTCHURCH: A: 112 Antigua Street,
Sydenham, Christchurch 8022

TAURANGA: A: 11 Newton Street,
Mt Maunganui, Tauranga 3116

